

ST. CHARLES LANDINGS

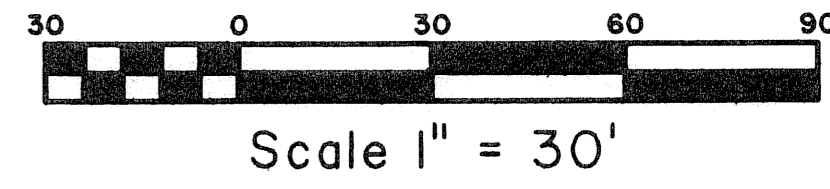
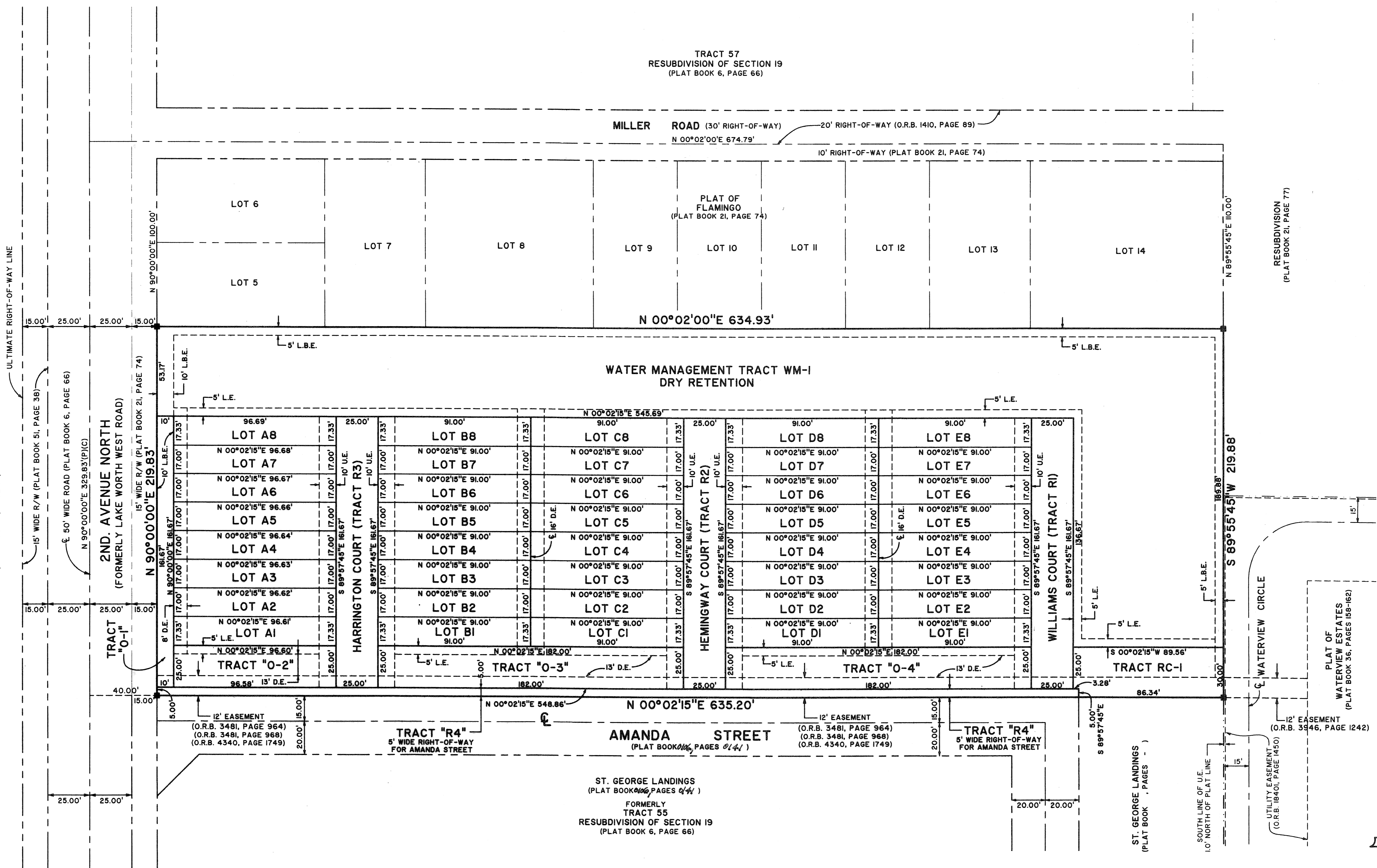
VILLAGE OF PALM SPRINGS, PALM BEACH COUNTY, FLORIDA,
 LYING IN SECTIONS 19, TOWNSHIP 44 SOUTH, RANGE 43 EAST, BEING A REPLAT OF LOTS 1, 2, 3, 4 AND LOTS A AND B,
 PLAT OF FLAMINGO AS RECORDED IN PLAT BOOK 21, PAGE 74, PUBLIC RECORDS OF PALM BEACH COUNTY, FLORIDA.
 SHEET 2 OF 2 OCTOBER, 2005

143

STATE OF FLORIDA SS
 COUNTY OF PALM BEACH
 THIS PLAT WAS FILED FOR RECORD AT _____
 M., THIS _____ DAY OF _____ 2005
 AND DULY RECORDED IN PLAT BOOK NO. _____
 ON PAGE _____
 SHARON R. BOCK,
 CLERK AND COMPTROLLER,
 PALM BEACH COUNTY
 BY _____ D.C.

TRACT 57
 RESUBDIVISION OF SECTION 19
 (PLAT BOOK 6, PAGE 66)

MILLER ROAD (30' RIGHT-OF-WAY)
 N 00°02'00"E 674.79'
 20' RIGHT-OF-WAY (O.R.B. 1410, PAGE 89)
 10' RIGHT-OF-WAY (PLAT BOOK 21, PAGE 74)



Landmark Surveying & Mapping Inc.
 1850 Forest Hill Boulevard
 Ph. (561) 433-5405 Suite 100 W.P.B. Florida
 LB # 4396

ST. CHARLES LANDINGS